



Maestro Digital Mine  
 87 Magill Street  
 P3Y 1K6  
 Canada  
 Phone +1 705 805 6918  
 bryan.zepeda@maestrodigitalmine.com  
 www.maestrodigitalmine.com

# Measurement Report

## General Information

Customer	Name of Measurement Program	Basic View
Test Mine	Date of Measurement	10/16/23 2:18:21 PM

## Instrument Information

Instrument Name / Serial Number	Measurement Parameters	
EZ DriftCal™	General	Area: 34.4215m <sup>2</sup> Funnel factor: Off
	Temperature, Flow Velocity, Volume Flow	

## Measuring Site

Measuring Site Name	4600L	Year of Construction
System Number		System Serial Number
System Type		Manufacturer

## Measurement Parameters

Measuring mode	Continuous	End	10/16/23 2:18:18 PM
Measuring Cycle	1 Sec	Duration	1 Min. 1 Sec
Start Time	10/16/23 2:17:17 PM		

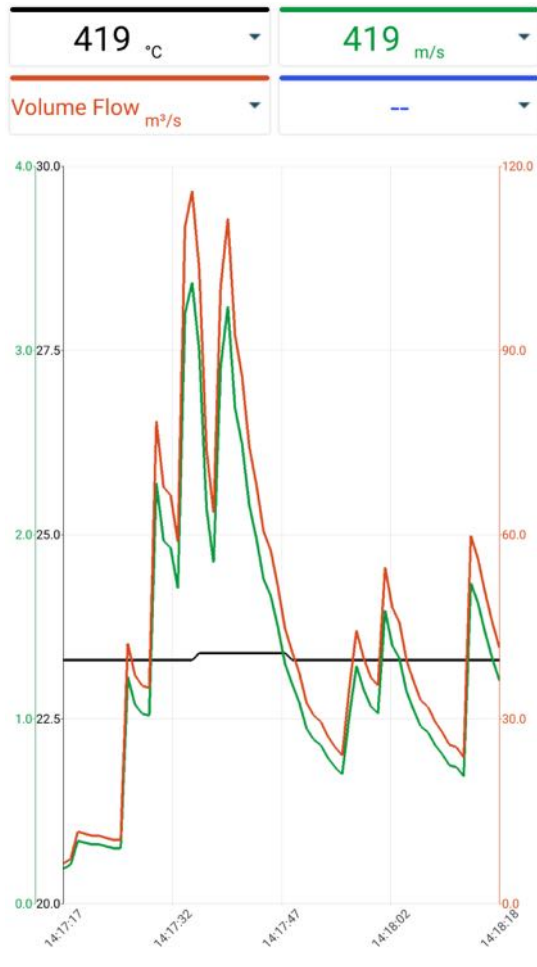
## Measurement

Date/Time	419 [°C]	419 [m/s]	Volume Flow [m <sup>3</sup> /s]
10/16/23 2:17:17 PM	23.3	0.19	6.5400
10/16/23 2:17:18 PM	23.3	0.21	7.2286
10/16/23 2:17:19 PM	23.3	0.34	11.7033
10/16/23 2:17:20 PM	23.3	0.33	11.3592
10/16/23 2:17:21 PM	23.3	0.32	11.0150
10/16/23 2:17:22 PM	23.3	0.32	11.0150
10/16/23 2:17:23 PM	23.3	0.31	10.6706
10/16/23 2:17:24 PM	23.3	0.30	10.3264
10/16/23 2:17:25 PM	23.3	0.30	10.3264

Date/Time	419 [°C]	419 [m/s]	Volume Flow [m³/s]
10/16/23 2:17:26 PM	23.3	1.23	42.3386
10/16/23 2:17:27 PM	23.3	1.08	37.1753
10/16/23 2:17:28 PM	23.3	1.03	35.4542
10/16/23 2:17:29 PM	23.3	1.02	35.1100
10/16/23 2:17:30 PM	23.3	2.28	78.4811
10/16/23 2:17:31 PM	23.3	1.97	67.8105
10/16/23 2:17:32 PM	23.3	1.93	66.4336
10/16/23 2:17:33 PM	23.3	1.71	58.8608
10/16/23 2:17:34 PM	23.3	3.20	110.1489
10/16/23 2:17:35 PM	23.3	3.37	116.0005
10/16/23 2:17:36 PM	23.4	3.00	103.2647
10/16/23 2:17:37 PM	23.4	2.15	74.0064
10/16/23 2:17:38 PM	23.4	1.85	63.6797
10/16/23 2:17:39 PM	23.4	2.92	100.5108
10/16/23 2:17:40 PM	23.4	3.24	111.5258
10/16/23 2:17:41 PM	23.4	2.69	92.5939
10/16/23 2:17:42 PM	23.4	2.49	85.7097
10/16/23 2:17:43 PM	23.4	2.16	74.3506
10/16/23 2:17:44 PM	23.4	1.98	68.1547
10/16/23 2:17:45 PM	23.4	1.76	60.5819
10/16/23 2:17:46 PM	23.4	1.67	57.4839
10/16/23 2:17:47 PM	23.4	1.50	51.6322
10/16/23 2:17:48 PM	23.4	1.30	44.7481
10/16/23 2:17:49 PM	23.3	1.19	40.9617
10/16/23 2:17:50 PM	23.3	1.09	37.5194
10/16/23 2:17:51 PM	23.3	0.95	32.7006
10/16/23 2:17:52 PM	23.3	0.89	30.6353
10/16/23 2:17:53 PM	23.3	0.86	29.6025
10/16/23 2:17:54 PM	23.3	0.79	27.1931
10/16/23 2:17:55 PM	23.3	0.74	25.4719
10/16/23 2:17:56 PM	23.3	0.70	24.0950
10/16/23 2:17:57 PM	23.3	1.02	35.1100
10/16/23 2:17:58 PM	23.3	1.29	44.4039
10/16/23 2:17:59 PM	23.3	1.16	39.9289
10/16/23 2:18:00 PM	23.3	1.07	36.8311
10/16/23 2:18:01 PM	23.3	1.03	35.4542
10/16/23 2:18:02 PM	23.3	1.59	54.7303
10/16/23 2:18:03 PM	23.3	1.40	48.1903
10/16/23 2:18:04 PM	23.3	1.33	45.7806
10/16/23 2:18:05 PM	23.3	1.15	39.5847
10/16/23 2:18:06 PM	23.3	1.05	36.1425
10/16/23 2:18:07 PM	23.3	0.96	33.0447
10/16/23 2:18:08 PM	23.3	0.93	32.0119
10/16/23 2:18:09 PM	23.3	0.86	29.6025
10/16/23 2:18:10 PM	23.3	0.81	27.8814
10/16/23 2:18:11 PM	23.3	0.75	25.8161
10/16/23 2:18:12 PM	23.3	0.74	25.4719
10/16/23 2:18:13 PM	23.3	0.69	23.7508
10/16/23 2:18:14 PM	23.3	1.74	59.8936
10/16/23 2:18:15 PM	23.3	1.63	56.1072
10/16/23 2:18:16 PM	23.3	1.47	50.5997
10/16/23 2:18:17 PM	23.3	1.33	45.7806
10/16/23 2:18:18 PM	23.3	1.21	41.6500

Date/Time	419 [°C]	419 [m/s]	Volume Flow [m³/s]
Overall Average	23.3	1.33	45.8417
Minimum Total	23.3	0.19	6.5400
Maximum Total	23.4	3.37	116.0005

Attached graphic sections



Attached Images

---



---

10/16/23

Date

Technician

Signature